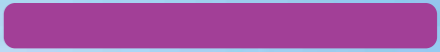




# OIL & GAS:

FROM UPSTREAM TO DOWNSTREAM





# OUR CORPORATE SOCIAL RESPONSIBILITY & SUSTAINABLE DEVELOPMENT POLICY

At the heart of VINCI's integrated model, VINCI's subsidiaries form an unrivaled **network of expertise** with local roots across the world.

From the beginning of the design phase for a project up to maintenance and operation activities, we put **safety first** in our work: safety for workers and for end-users. For **Oil & Gas** activities, we propose the most **comprehensive solution** for projects located in the remote areas of the world. By **managing** overall projects, we **secure** our clients' **investments** and development **planning**.

### Safety First

Beyond the application of laws and contractual obligations, all means are put forward to protect the health and safety of all stakeholders. Dedicated programs for top managers such as the "managing safety" or "Safety in Design" processes have been developed. Safety is the priority starting in the design phase of the project.



### ISO 14 001

The environmental management system in use at VINCI is compliant with the stipulations of the ISO 14001: 2004 standard and has been certified by AFAQ since 2004. It is audited every year as part of VINCI's environment report.



### The Global Compact

VINCI signed on with the principles of the Global Compact in April 2003 (a UN initiative). The company is committed to respecting the 10 principles of the Compact, in the areas of human and labor rights, environmental protection, and anti-corruption efforts.



### "Environment Focused"

VINCI is committed to protecting the environment at its worksites through the protection of natural sites, plants and wildlife on all our worksites, active pollution prevention, improvement to the comfort level of neighboring populations, better communication with stakeholders, and more.





1

### PROCESSING & EXPORT FACILITIES

Engineering, procurement, construction and commissioning of up-stream and down-stream processing & export facilities for oil & gas products



2

### ONSHORE PIPELINES

Engineering, procurement, construction, commissioning, operation and maintenance of onshore pipelines and ancillary systems



3

### TANKS FARMS & PRESSURE VESSELS

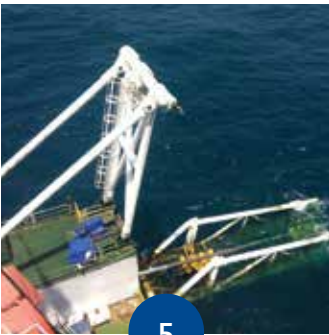
Engineering, procurement, construction and commissioning of tank farms with storage tanks for all products, spheres, bullets and all loading/offloading facilities



4

### LNG TANKS

- Engineering, procurement, construction & commissioning of cryogenic tanks including large full containment LNG tanks
- Specialist in diaphragm walls for half-buried tanks
- Structural strengthening



5

### OFFSHORE OPERATIONS

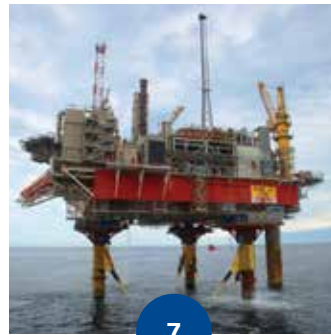
- Engineering, procurement, construction and installation of offshore facilities in shallow water
- Very shallow water pipeline installation, difficult landfall operations and pipeline burial



6

### COMMISSIONING, OPERATIONS & MAINTENANCE

- Commissioning, pre-commissioning, start-up
- Global maintenance contract: design and execution, E&I, instrumentation, mechanical engineering, HVAC



7

### SPECIALIZED EPC

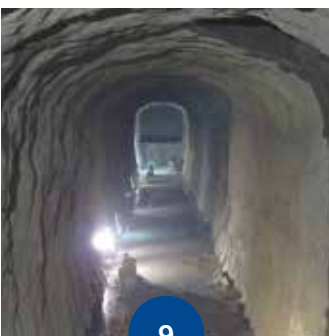
- Brownfield projects, power generation packages, engineering of control & safety systems, modernization & extension projects
- High integrity protection systems, analyzers & sampling systems, E&I, technical room & shelter integration



8

### DRILLING

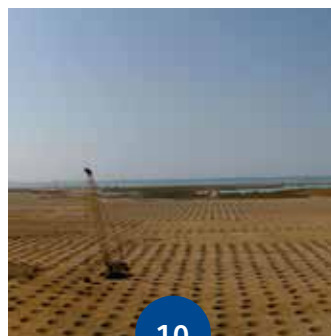
- Deep onshore drilling for oil & gas as well as geothermal energy
- Horizontal drilling for long pipeline crossing of rivers, cliffs, etc.



9

### UNDERGROUND STORAGE FACILITIES

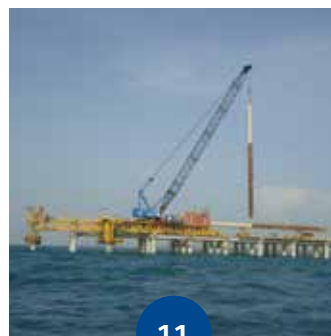
Consultancy, construction supervision and operation of underground storage facilities, structural strengthening



10

### SITE PREPARATION WORKS & SOIL IMPROVEMENT

- Earthmoving, access roads
- Dynamic and vibro compaction, dynamic replacement, stone columns, controlled modulus columns and drains, onshore and offshore



11

### MARINE WORKS

- Geotechnical, diaphragm wall, deck on piles and tiebacks for MOF, jetties and berths with launching girders, barges for dolphins, breakwaters
- Cathodic protection and structural retrofitting



12

### FOUNDATIONS WORKS

Stone columns, soil mixing, jet grouting, micro piles, steel piles, concrete piles, barrettes and quay wall specialist

# SOLUTIONS THROUGHOUT THE ENTIRE LIFECYCLE OF OIL & GAS PROJECTS:

Engineering - Procurement - Construction - Commissioning & Decommissioning - Operations & Maintenance



**Safety**

Engineering

Network of **expertise**

Comprehensive **construction solution**

Remote locations

Project management

**Construction excellence**

Quality

**Environment**

R E A L  
S U C C E S S  
I S T H E  
S U C C E S S  
Y O U S H A R E



[oil.gas@vinci.com](mailto:oil.gas@vinci.com)

**About VINCI group:**

VINCI is a global player in concessions and construction, employing close to 185,000 people in some 100 countries. The Group designs, finances, builds and operates infrastructure and facilities that help improve daily life and mobility for all.

[www.vinci.com](http://www.vinci.com)

